



## West Coast and Malmö

Price is for 2 adults and 2 children and includes

### Flights times are approximate

Date	Flight No	Departure Time	Airport	Arrival Time	Airport
18/08/10	SK524	0920	London Heathrow	1220	Gothenburg Landvetter
30/08/10	SK1517	1555	Copenhagen	1655	London Heathrow

### Hire Car

Type VW Passat or similar with a/c

Pick up Gothenburg Landv.

Date 18/08/10

Time 1 hour after landing

Drop off Malmö City

Date 27/08/10

Time 1600

### Accommodation

#### West Sweden

Handelsman Flink – 18<sup>th</sup> 19<sup>th</sup> & 20<sup>th</sup> August

Double room with extra beds



Located on the island of Flatön, in the heart of the Bohuslän archipelago and just 1 hour from Gothenburg. This modern hotel has just 10 rooms all with fantastic sea views and is widely regarded as one of the best hotels along the coast. Each room has it's own balcony or terrace offering unique views of some of Sweden's most stunning scenery. This captivating coastline is scattered with hundreds of barren islands, rocky inlets and picturesque fishing villages.

## Koster Islands

Sydkoster Hotel Ekenäs – 21<sup>st</sup> 22<sup>nd</sup> & 23<sup>rd</sup> August

Suite



Stay on the car free Koster islands at the Sydkoster Hotel Ekenäs. Park your car in Strömstad and take the passenger ferry to Sweden's most westerly populated islands, terminating just 100m from your hotel. Attractions include this unique seaside location, beaches, rocky islands and of course the magic "Koster light", which has inspired many artists on the island. Renting a bike and a guided tour are strongly recommended so you can appreciate all that is surrounding you. In 2009 the Koster Archipelago National Park was inaugurated and the Koster islands will be preserved as a spectacular nature reserve forever.

## Helsingborg

Hotel Marina Plaza – 24<sup>th</sup> 25<sup>th</sup> & 26<sup>th</sup> August

Family Room

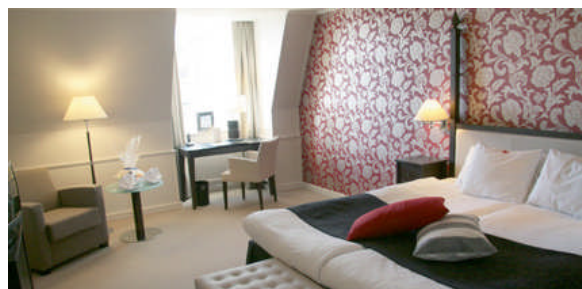


The twin cities of Helsingborg in Sweden and Elsinore (Helsingør in Danish) in Denmark (at the narrowest part of the strait of Öresund) give you the opportunity to visit two countries in one day. They have not always been two countries: up until 350 years ago, it was Danish territory on both sides of Öresund. The hotel is located on the harbour front in the centre of Helsingborg, in the northern part of Skåne. From the harbour there are fantastic views across the Öresund stretch of water towards Denmark.

## Malmö

Savoy Hotel – 27<sup>th</sup> 28<sup>th</sup> & 29<sup>th</sup> August

Double room with extra beds



The construction of the Öresund Bridge has brought prosperity and diversity to Malmö and the Skåne region. Many good shops, bars and restaurants line the pedestrianised areas and Simply Sweden recommends a visit to Lilla Torget and Saluhallen. The award winning area of the Western Harbour is also a must do, with sandy beaches and long promenade, restaurants and cosy cafes, complemented by a stunning view across the sea towards Copenhagen. You will be accommodated in one of Malmö's leading hotels, the 4 star Savoy Hotel, just a couple minutes walk from central station.

**Total Price £3765**

**tailor made holidays to Sweden**

