



## Inlandsbanan – Inland Railway

Price is for 3 adults and 2 children and includes

**Flights** times are approximate

Date	Flight No	Departure		Arrival	
		Time	Airport	Time	Airport
26/07/10	SK1530	0715	London Heathrow	1040	Stockholm Arlanda
26/07/10	SK530	1635	London Heathrow	2005	Stockholm Arlanda
03/08/10	SK1523	1610	Stockholm Arlanda	1750	London Heathrow

**Trains** times are approximate

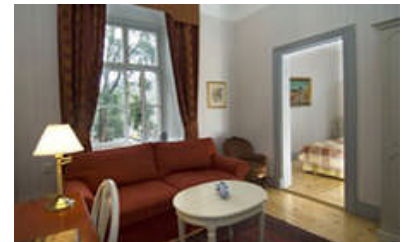
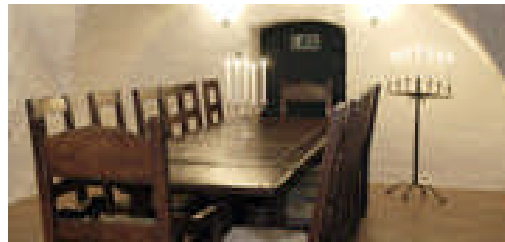
Departure			Arrival		
Date	Time	Station	Date	Time	Station
27/07/10	0744	Stockholm Central	27/07/10	1138	Mora Strand
02/08/10	1842	Gällivare Central	03/08/10	0915	Stockholm Central private 6 bed cabin

## Itinerary

### Stockholm

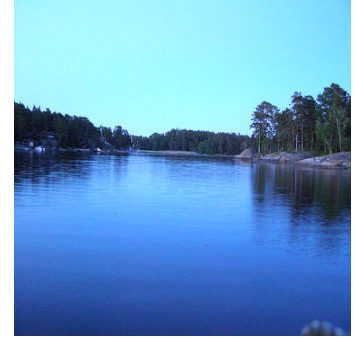
**Columbus Hotel – 26<sup>th</sup> August**

**2 Double rooms with an extra bed**



An excellent small and personal hotel located in a listed building from 1780 and on the fashionable island of Södermalm. The building was converted into the Columbus Hotel in 1976 and fully refurbished just 2 years ago. Just 10 mins walk from the centrally located Gamla Stan (Old Town) and 2 mins from the nearest underground station.

## Discover the Inland Railway



### 26<sup>th</sup> July - UK to Stockholm

Fly from London or Manchester to Stockholm, stay at the centrally located Columbus Hotel and take this opportunity to explore this wonderful city on water.

### 27<sup>th</sup> July - Stockholm to Mora

Take the train between Stockholm and Mora on the shores of Lake Siljan, created by a meteor impact 365 million years ago. Mora is rich in culture with plenty to see and do! It is home to the worlds largest cross country ski race 'Vasaloppet', held every February. In the summer the sun warms the lake and bathing is a popular summer pastime at the city centre beach. We suggest you make time for a visit to the Vasa Race museum (Vasaloppsmuseet). You will be accommodated at the Best Western Mora Hotel. Train departs 0740 and arrives 1140.

### 28<sup>th</sup> July - Mora to Östersund

Time to visit the home of the famous painter Anders Zorn, Zorngården (entry included) before catching the afternoon train to Östersund. The train passes many water features on the way but the waterfalls at Strorstupet and Helvetesfallet are worthy of note. Short stops for coffee and lunch allow you to explore the nature close to the railway line. There is also the opportunity to visit a bears den in Orsa. In Östersund you will stay at the Clarion Hotel Grand. Train departs 1435 and arrives 2040.

### 29<sup>th</sup> July - Östersund

Östersund is associated with winter and major sporting events, but it is also a real summer city. Östersund has much to offer everyone; historical walks, little churches, adventure pools, quad biking and much more including a boat trip on Sweden's 5th largest lake, Storsjön. Entry to the heritage museum, Jamtli Historieland, is included.

### 30<sup>th</sup> July - Östersund to Vilhelmina

Early morning train to Vilhelmina passing streams and lakes bursting with fish; you may have the chance to try your luck! Vilhelmina has a Sami craft gallery, Beaverland, guided walks, guided cycle rides, heated pools, SPA and the traditional Swedish hobby of lake swimming. Your accommodation this evening is Hotell Vilhelmina. Train departs 0715 and arrives 1100.

### 31<sup>st</sup> July - Vilhelmina to Arvidsjaur

This part of the journey offers you the best opportunities to see reindeer and elk as the forest offers them excellent protection. There is also an opportunity to visit the Inland Railway museum where there is a steam train running every Friday and Saturday from 4th July to 9th Aug. The region surrounding Arvidsjaur has 12,000 lakes and 30,000 reindeer. Perhaps a Beaver safari or a helicopter ride to the mountains? Hotel Lapponia is your resting place. Train departs 1135 and arrives 1540.

### 1<sup>st</sup> Aug - Arvidsjaur to Gällivare

The train stops as you cross the Arctic Circle and you will travel through the World Heritage site of Lapponia and the Muddus National Park. Gällivare is the heart of Sami country and you will have the opportunity to see how modern living has combined with a traditional way of life. In the evening it is still possible to see the 1/11 of the total area of Sweden whilst enjoying an ice cream in the middle of the night, under the midnight sun at the top of Dundret mountain (not available after 3<sup>rd</sup> Aug). You will be accommodated at Grand Hotel Lapland. Train departs 1555 and arrives 2145.

### 2<sup>nd</sup> Aug - Gällivare to Stockholm

**tailor made holidays to Sweden**



At this point you may decide you wish to continue exploring Swedish Lapland and the experts at Simply Sweden are here to offer their experience and advice. This holiday concludes with another spectacular train journey as you will have a private cabin on the overnight train to Stockholm.

### **3<sup>rd</sup> Aug - Return to the UK**

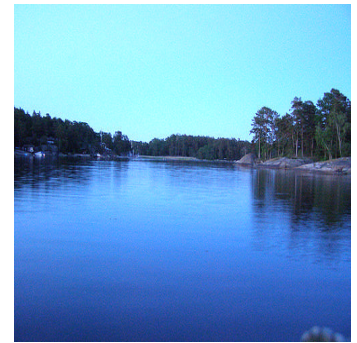
Arrive at Stockholm Central (or other part of Sweden) and catch your flight back to the UK.

**Price £4670**

### **Price includes**

Flights from the UK to Stockholm. All rail transport day 2 to day 8 with reserved seats. Bed and breakfast at all hotels. Activities and accommodation may be subject to change. Train times are approx.

### **Soul of Lapland**



### **26<sup>th</sup> July - UK to Stockholm**

Fly from London or Manchester to Stockholm, stay at one of our centrally located hotels in Stockholm and take this opportunity to explore this wonderful city on water. You may decide to travel a day or two earlier to see more of Stockholm and Stockholm Archipelago.

### **27<sup>th</sup> July - Stockholm to Mora**

Take the train between Stockholm and Mora on the shores of Lake Siljan, created by a meteor impact 365 million years ago. Mora is rich in culture with plenty to see and do! It is home to the worlds largest cross country ski race 'Vasaloppet', held every February. In the summer the sun warms the lake and bathing is a popular summer pastime at the city centre beach. We suggest you make time for a visit to the Vasa Race museum (Vasaloppsmuseet). You will be accommodated at the Best Western Mora Hotel. Train departs 0740 and arrives 1140.

### **28<sup>th</sup> July - Mora to Östersund**

Time to visit the home of the famous painter Anders Zorn, Zorngården or the Vasaloppet museum, before catching the afternoon train to Östersund. The train passes many water features on the way but the waterfalls at Storstupet and Helvetesfallet are worthy of note. Short stops for coffee and lunch allow you to explore the nature close to the railway line. There is also the opportunity to visit a bears den in Orsa. In Östersund you will stay at the Clarion Hotel Grand. Train departs 1435 and arrives 2040.

### **29<sup>th</sup> July - Östersund**

Östersund is associated with winter and major sporting events, but it is also a real summer city. Östersund has much to offer everyone; historical walks, little churches, adventure pools, quad biking and much more including a boat trip on Sweden's 5th largest lake, Storsjön. Entry to the Sami heritage museum, Jamtli Historieland, is included.

### **30<sup>th</sup> July - Östersund to Slagnäs**

**tailor made holidays to Sweden**



Early morning train to Slagnäs passing streams and lakes bursting with fish; you may have the chance to try your luck! There is a short bus transfer to Båtsuoj Sami Centre where you will experience the sami culture first hand, meet reindeer and indulge yourself in a traditional sami meal. Your hotel will be Hotel Lyktan in Arjeplog. Train departs 0715 and arrives 1452.

### **31<sup>st</sup> July - Arvidsjaur to Jokkmokk**

Spend the morning with a guided walk, with the emphasis on the exciting history of Arjeplog. Entrance to the Silver Museum is included. Transfer bus to Arvidsjaur for an afternoon departure to Jokkmokk. This part of the journey offers you some of the best opportunities to see reindeer and elk as the forest offers them excellent protection. The region surrounding Arvidsjaur has 12,000 lakes and 30,000 reindeer. As you cross the arctic circle there is a short stop for a photo opportunity! You will travel through the World Heritage site of Lapponia and the Muddus National Park. Hotel Jokkmokk is your resting place. Train departs 1555 and arrives 1931.

### **1<sup>st</sup> Aug - Jokkmokk to Gällivare**

Spend the day exploring Jokkmokk. Entrance to the Mountain Garden and Ajtte Sami Museum are included. Gällivare is the heart of Sami country and you will have the opportunity to see how modern living has combined with a traditional way of life. In the evening it is still possible to see the 1/11 of the total area of Sweden whilst enjoying an ice cream in the middle of the night, under the midnight sun at the top of Dundret mountain (an extra for this tour and not available after 3rd Aug). You will be accommodated at Grand Hotel Lapland. Train departs 1931 and arrives 2145.

### **2<sup>nd</sup> Aug - Gällivare to Stockholm Airport**

At this point you may decide you wish to continue exploring Swedish Lapland and the experts at Simply Sweden are here to offer their experience and advice. This holiday concludes with another spectacular train journey as you will have a private cabin on the overnight train to Stockholm.

### **3<sup>rd</sup> Aug - Return to the UK**

Arrive at Stockholm (or other part of Sweden) and catch your flight back to the UK.

## **Price £5750**

### **Price includes**

Flights from the UK to Stockholm. All rail transport day 2 to day 8 with reserved seats. Bed and breakfast at all hotels. Activities and accommodation may be subject to change. Train times are approx.