



## Stockholm, Göta Kanal Cruise – Summer 2010

Price is based on 3 adults and includes

**Flights** times are approximate

Date	Flight No	Departure Time	Airport	Arrival Time	Airport
23/06/10	SK530	1635	London Heathrow	2005	Stockholm Arlanda
06/07/10	SK515	1635	Gothenburg	1740	London Heathrow

### Hire Car

**Type** VW Golf or similar with a/c

**Pick up** Gothenburg City.

**Date** 02/07/10

**Time** 15:00

**Extras** \*

**Drop off** Gothenburg Landv.

**Date** 06/07/10

**Time** 2 hrs prior to departure

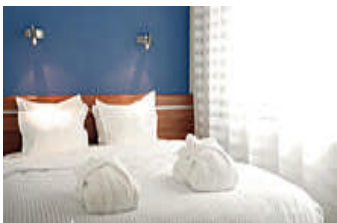
### Stockholm Card

72 hour Stockholm Cards which includes all local public transport on trains, busses and underground and entrance to over 75 museums and other attractions. More information can be found at [www.simplysweden.co.uk/stockholmcards.htm](http://www.simplysweden.co.uk/stockholmcards.htm)

### Itinerary

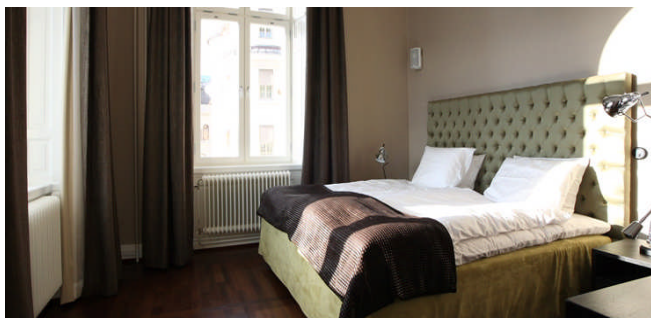
#### Choice of Stockholm Hotels

#### Nordic Sea Hotel 23<sup>rd</sup> to 29<sup>th</sup> June



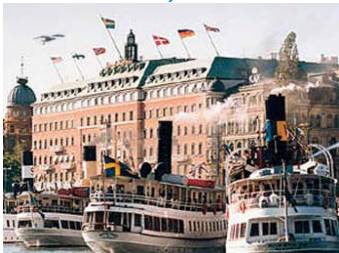
Situated next to the central bus and rail station, just a short walk from all of Stockholm's major attractions and fashionable shopping areas, perfect for a hassle free holiday. The hotel is home of the worlds first permanent ICEbar, has valet parking, porters, concierge, a mini-gym, sauna and an in-house massage therapist.

### Lydmar Hotel 23<sup>rd</sup> to 29<sup>th</sup> June



With a prime location on the water front in Stockholm harbour and contemporary art displays, the Lydmar hotel is now recognised as one of Stockholm's leading hotels. No room is the same as the next and the standard double rooms start at 19-23sqm and the extra large suite is 70sqm with an unforgettable view across the harbour to the Royal Palace. In November 2009 Lydmar was awarded with the 'Restaurant Environment of the Year' in the annual Restaurant awards in Sweden. 'Relaxed, fun and knowledgeable. Conceptually to the max, yet dynamic and balanced. An upper-class living room in giant format, small tables, sofas, site-built bookshelves, bar mingling and cool background music.'

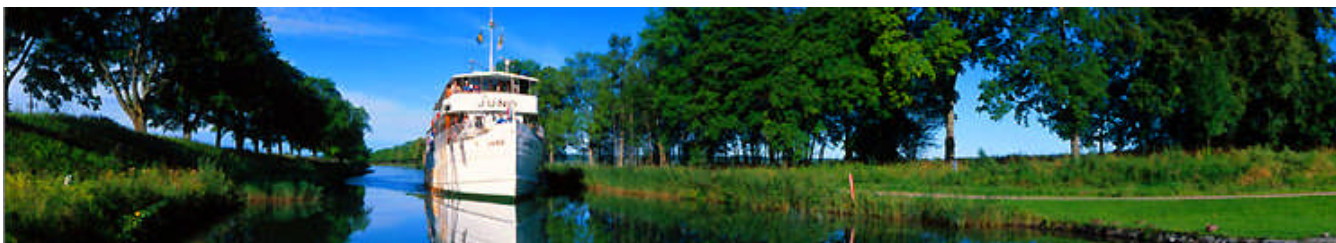
### Grand Hotel, Stockholm 23<sup>rd</sup> to 29<sup>th</sup> June



Arguably Stockholm's best five star hotel. Many of the rooms offer unrivalled views across the harbour and of the Royal Palace. The Grand Hotel opened in 1874, is the temporary home to many Nobel Prize winners every December and boasts membership of the Leading Hotels of the World. All of Stockholm's major attractions are within just a few minutes walk, including the world famous Gamla Stan (Old Town) and the Vasa museum.

### Göta Kanal Cruise

Coast to Coast, Göta Kanal 29<sup>th</sup> June to 2<sup>nd</sup> July (4 berth Cabin on Main Deck)



Explore Sweden as this unique Swedish cruise takes you between 2 seas, along 3 canals, across 8 glorious lakes and through 66 locks. The Göta Kanal may not be the fastest way to travel between Stockholm and Gothenburg but this is certainly one of the most gracious, beautiful and relaxing forms of transport.

3 magnificent ships (M/S Diana, M/S Juno and M/S Wilhelm Tham), dating back to the 1800's, offer stunning views over the Swedish countryside. Each ship has a meticulously maintained lounge and dining room, offering delicious traditional Swedish meals and a different view each evening. You will be catered for on a full board basis whilst on the ship; breakfast buffet, 2 course lunch and 3 course evening meal.

The cabins are small, comfortable and tastefully decorated. Most are fitted with bunk beds and each has a hand basin; WCs and showers are adjacent in the corridor. As there is plenty to see and do most guest are only in their cabins to sleep.

**tailor made holidays to Sweden**



## Cottage Accommodation Stenebynäs – Duvan



At the end of a beautiful peninsula in lake Iväg stands Stenebyäs Estate, in total tranquillity. Here you can truly listen to the sound of nature, the wind in the trees, the waves gently breaking at the waters edge, a deer barking and fish jumping in some of the most unspoilt countryside in Europe. All this is less than 4 hours from London!

Duvan is a spacious old style timber cabin just 70 meters from the 2km long beach on Lake Iväg, private to this 100 hectare estate. The double bedroom opens onto the upstairs balcony offering stunning views of the lake and beautiful Swedish countryside. Local activities include boat trips, museum railways, elk parks, nature reserves and the stunning West Coast (all within 1hr)

- 4 beds, 2 bedrooms, 1 double, 1 twin
- Fully equipped kitchen including BBQ
- Shower, WC and access to washing machines and lakeside sauna
- Outdoor furniture, private terrace and open fire
- Approx 100 miles from Gothenburg (Göteborg)
- Included in the price is use of a kayak and tennis courts
- Rowing boat, motor and cycles available to rent

## Prices per Hotel and room type for 3 adults

### Nordic Sea

Total Price £6265

### Lydmar Hotel

Medium Room - Total Price £7395

Large Room - Total Price £8440

### Grand Hotel

Double Deluxe with View - Total Price £10,035

Premium Double - £7365