

Reference ICEHOTEL_INCENTIVE



ICEHOTEL Incentive – 2 nights
Recommended for groups between 6 & 50 adults

Flights times are approximate
Outbound

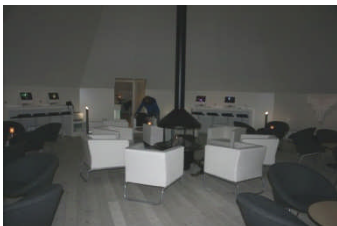
Date	Flight No	Departure		Arrival	
		Time	Airport	Time	Airport
Day 1	SK1530	0700	London Heathrow	1035	Stockholm Arlanda
Day 1	SK1042	1140	Stockholm Arlanda	1315	Kiruna

Inbound

Date	Flight No	Departure		Arrival	
		Time	Airport	Time	Airport
Day 3	SK1045	1345	Kiruna	1525	Stockholm Arlanda
Day 3	SK1523	1605	Stockholm Arlanda	1750	London Heathrow

Programme

Day 1



Upon arrival at Kiruna airport you will be met by ICEHOTEL representatives and taken to the Lapish Hut next to the terminal building. You will be served a delicious cold lunch buffet. The hut is nicely furnished, you can sit back and relax in comfortable sofas.

1400 After lunch you will be supplied with warm overalls, hat, gloves and insulated winter boots. You will then be transferred to the ICEHOTEL by dogsled.

Luggage will be transferred separately to the ICEHOTEL.

1600 Arrival at the ICEHOTEL. Now it's time for a guided tour of the ICEHOTEL.

The ICEHOTEL is situated in the village of Jukkasjärvi, 200 kilometres north of the Arctic Circle in Swedish Lapland. The heart and backbone of the area is the river Torne. Covered with a metre thick layer of ice during winter, the river is the source of the ICEHOTEL.

The guided tour ends with a welcome drink in glasses made of ice.



1700 Check into your warm accommodation, double rooms.

A short walk (900 metres) to the old cultural sauna in Jukkasjärvi which has been heated for more than six hours in preparation for your arrival.

In combination with the sauna you can also enjoy relaxing in a hot tub, outdoors under the stars and Northern Lights.

In the relax room outside the sauna the fire is burning.

2100 After the sauna you will enjoy a dinner buffet in the rustic and cosy Old Homestead restaurant.

Walk back to your warm accommodation.

Day 2



0800 A breakfast buffet is served at the ICEHOTEL restaurant.

1000 Dress in your warm winter clothes.

1030 After a short introduction about safety and how to drive a snowmobile you will embark on a snowmobile safari. (2 persons per snowmobile)

The landscape is covered in deep white snow and the views are breathtaking.

You will stop en-route and be served lunch.

1430 Time at leisure. You could visit the ICEHOTEL shop or just relax in the lounge.

1800 A four course Lappish dinner served in the ICEHOTEL restaurant.

At the ICEHOTEL many delicacies are served both as traditional dishes and as part of an exciting cross-over cuisine inspired by global culture.

The restaurant is not made of ice, instead it offers a warm and welcoming atmosphere and great interior design. For the extra touch of the Arctic many dishes are served on plates of ice, made from the crystal clear ice of the river Torne.



Your accommodation for the night is an ARTsuite. You will stay amongst ice art which has been individually designed by artists from all over the world.

No matter how cold it may be outside, the temperature inside the ICEHOTEL never drops below -5C to -8C. You sleep in a cosy sleeping bag on a special bed of snow and ice, with reindeer skins.

The Absolut ICEbar and warm pub are open until 0100.

Day 3



- 0700** You will be woken in your ARTsuite with a cup of hot lingon berry juice at your bedside.
A short walk to the Jukkasjärvi sauna where a hot sauna is waiting for you. After the sauna you will have a breakfast buffet.
- 0930** Now the time has come for ice sculpting.
ICEHOTEL artists will introduce you to the magical world of ice sculpting using special ice implements along with their professional guidance.
- 1130** A lunch buffet will be served at the ICEHOTEL restaurant.
- 1230** Transfer to Kiruna airport for your flight to Stockholm

Price on enquiry

A full range of winter activities including snowmobiles, huskies, sami & reindeer experiences is available at ICEHOTEL

All ICEHOTEL photos © Håkan Hjort, Peter Grant, Hans-Olof Utsi and Tomas Utsi.