

Reference FULUSTOCK



## Fulufjällsbyn - winter

### Flights times are approximate

Date	Flight No	Departure Time	Airport	Arrival Time	Airport
Day 1	SK1530	0700	London Heathrow	1035	Stockholm Arlanda
Day 1	SK526	1035	London Heathrow	1405	Stockholm Arlanda
Day 9	SK1523	1610	Stockholm Arlanda	1800	London Heathrow

or

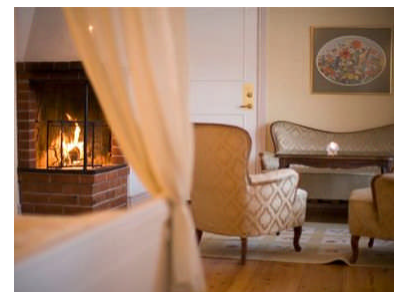
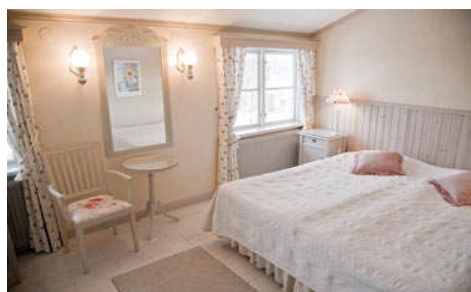
Day 1	SK2548	1005	Manchester	1325	Stockholm Arlanda
Day 9	SK2549	1625	Stockholm Arlanda	1800	Manchester

### Hire Car

Type	Car of your choice or similar with a/c	Extras	*
Pick up Time	Airport collection 1 hr after landing	Drop off Time	Airport drop off 2 hrs prior to departure

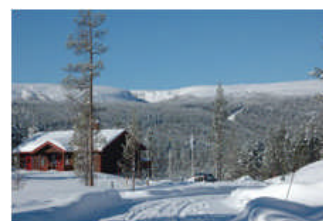
### Accommodation

**Klockgården Hotel** Day 1 to 2



Located approx 280km from Stockholm with stunning views across Lake Siljan, Klockgården Hotel is rich in tradition and folklore, with a wide range of cultural and sporting activities to offer including excellent personal service and exceptional Swedish cooking. The large gardens surrounding the hotel add to the beauty of the setting. Local activities include golf, walks, cycle tours and it is just 800m to the beach. You will also find the museum of culture, the workshop making the famous wooden Dala horses and the Zorn museum nearby.

**Fulufjällsbyn** Day 2 to 9



Deep in the Swedish countryside, high in the Fulufjällsbyn National Park, close to the Norwegian border (approx. 4hr30 from Oslo airport & 6hr30 from Stockholm), these cottages offer the perfect location for winter relaxation and adventure in the Swedish mountains. Fulufjällsbyn was created by the WWF (World Wildlife Fund) to raise the awareness of conservation and promote the stunning scenery and unique flora and fauna of one of Sweden's most beautiful National Parks.

The park covers 40,000 hectares and at its peak exceeds 1000m above sea level. Further down you will find birch and pine forests, deep ravines and unique wildlife and flowers. The rich variety of wildlife includes brown bears, lynx, elk, red deer and beavers. Look to the skies for eagles, harriers and owls. One of the most famous features of the park is Sweden's highest waterfall at 96 meters. Spectacular during the summer, magical in the winter when it is frozen!

**Park Facts**

- 22 self catering log cabins with 4, 6 and 8 beds all with a fully equipped kitchen (including dishwasher) and open fire
- Reception with visitors centre including coffee bar, information area, nature library and children's corner
- Restaurants close to the park at 2 and 6km
- Nearest supermarket 23km
- Over 150kms of marked walking trails / cross country ski tracks
- Some 300 lakes for ice fishing!
- Sweden's highest water fall at 96 meters
- 40,000 hectares of National Park
- National Park status achieved in 2002
- Highest peak is 1042m
- Local winter activities include snowshoe walking, horse and sledge, husky excursions, ice fishing, cross country skiing and downhill skiing. If you're lucky you may also catch the Northern Lights.
- More activities and pictures at <http://www.simplysweden.co.uk/fulufjallsbyn.php>

You will be accommodated in a 4 / 6 / 8 bed cabin on a self catering basis including bedding and towels.