

Reference: 27MAR



## Inland Railway & Norwegian Fjords Cruise

Price is for 2 adults and includes

**Flights** times are approximate / arrangements can be made from other airports

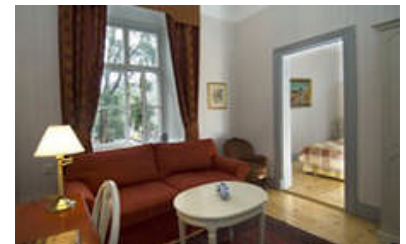
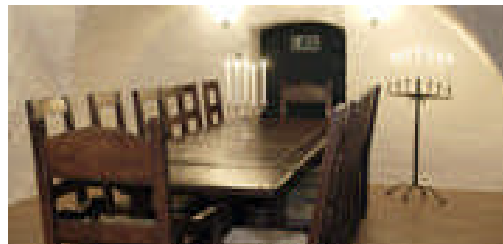
Date	Flight No	Departure		Arrival	
		Time	Airport	Time	Airport
27/3/09	SK526	1035	London Heathrow	1410	Stockholm Arlanda
4/4/09	SK537	1250	Trondheim	1345	Oslo
4/4/09	SK809	1505	Oslo	1625	London Heathrow

**Trains** times are approximate

Date	Departure		Arrival	
	Time	Station	Time	Station
28/3/09	0830	Stockholm C	1353	Östersund C

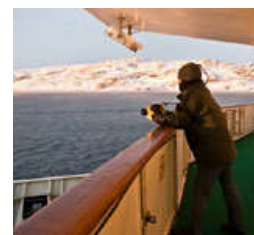
## Accommodation

**Columbus Hotel \*\*\***



An excellent small and personal hotel located in a listed building from 1780 and on the fashionable island of Södermalm. The building was converted into the Columbus Hotel in 1976 and fully refurbished just 2 years ago. Just 10 mins walk from the centrally located Gamla Stan (Old Town) and 2 mins from the nearest underground station.

## Inland Railway & Hurtigruten Norwegian Cruise



### Day 1 - UK to Stockholm

Fly from the UK to Stockholm, stay at the centrally located Columbus Hotel (upgrades also available) and take this opportunity to explore this wonderful city on water. You may decide to travel a day or two earlier to see more of Stockholm

### Day 2 – Stockholm to Östersund

Fly from the UK to Östersund, stay at the centrally located Hotel Älgen and take this opportunity to explore this winter city with historical walks, little churches and winter activities. You may decide to travel a day or two earlier to see Stockholm.

### Day 3 - Östersund to Storuman

As you leave Östersund you can see the mountain Åreskutan standing majestically in the west. The train heads due north through one of the areas with the highest concentration of bears in Sweden (they are hibernating at this time of year!). You should catch a quick glimpse of Ångermanland before entering Sweden's largest province – Lapland. You are now surrounded by a vast area of forests, mountains and rushing water. This is also reindeer country so don't be surprised if you see reindeer and elks along the tracks. You will be accommodated at Hotel Toppen Storuman just 250m from the station. Train departs 1000 and arrives 1600.

### Day 4 - Storuman to Jokkmokk

During today's journey you are going to cross the Arctic Circle (photo opportunity) and travel through one of the many national parks in Sweden. What is unique here is that Lapponia is a World Heritage Site with its mountains, lakes, delta landscape, ancient forests and around one hundred glaciers. You are looking at a landscape imbued with Sami heritage; inhabited since the Ice Age with a rich variety of flora and fauna including many endangered species. Lapponia also includes well-known areas such as Sarek, the largest marshlands in Western Europe, Stora Sjöfallet, Muddus, Padjelanta and Rapadalen. A unique environment for you to appreciate with a lunch stop in Arvidsjaur. Your hotel in Jokkmokk is Hotel Jokkmokk. Train departs 0930 and arrives 1800.

### Day 5 - Jokkmokk to Kiruna

Plenty of time to enjoy Jokkmokk and the surrounding area with many artists and skilled craftsmen plying their trade in this perfect environment. After breakfast a guided tour of the Ajtte Sami museum is included. Perhaps a little time to enjoy a winter activity by husky or snowmobile? Your hotel in Kiruna is Hotel Kebne. Train departs 1600 and arrives 1900.

### Day 6 - Kiruna to Narvik and Harstad

After breakfast you will visit the world famous and original ICEHOTEL. Admire the magnificent architecture, art and sculptures that have been carved in ICE, complemented by superb lighting, creating a mind blowing experience. Your accommodation this evening is F2 by Nordic Hotels. Train departs 1600 and arrival in Harstad at 2000.

### Day 7 - Norwegian fjords - Harstad to Stamsund

Check in and early departure on the Hurtigruten Coastal Express. This is one of the most beautiful parts of these stunning fjords and it is difficult to put into words just how impressive this scenery is. As you sail out of Harstad, Trondenes church dating back to Viking times is on the port side and after some precise manouervering the ship navigates the narrow and shallow Risøyrenna channel. After a short stop in Risøyhamn you sail through the Sortlandssund sound with the 1,262-metre high Møysalen mountain on the port side and the jagged peaks of Lofoten ahead. More spectacular views of note

include the towering Svolværgeita mountain on Svolvær and the fishing town of Stamsund, defying nature with comfortable rustic fishermen's huts.

### Day 8 - Norwegian fjords - Bodö to Rörvik

Arrival in Ørnes at breakfast time and a whole day exploring the scenic coast of Helgeland. Crossing the Arctic Circle, see the Hestemannen mountain on the island of Hestmanna and catch sight of the unique archipelago of Træna out to sea. People first settled out here 5,000 years ago! Protected by the large island of Tomma is Nesna, an idyllic, peaceful old trading post. Head into the archipelago to the larger island of Dønna and the town of Sandnessjøen. You couldn't wish for a better location. To the west the Dønnamannen mountain which rises 858 metres above sea level. To the east the elegant Helgelandsbrua bridge with a main span of almost 400 metres. We 'park' right in the centre - why not take a wander around the streets or a short shopping trip? Numerous legends and stories are associated with these islands and the mainland. One such story is about the Seven Sisters and Torghatten mountain and how they came to be such unusual shapes. After a brief stop at Brønnøysund's narrow harbour, we head south again toward the 500 million year old red mountains of the large island of Leka. After a day enjoying the sights, we arrive in Rörvik in the evening where we also meet the northbound Hurtigruten cruise.

### Day 9 - Trondheim to the UK

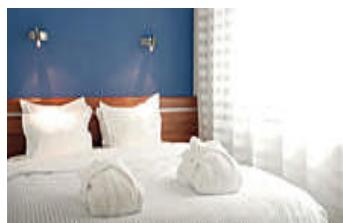
Early morning arrival in Trondheim and a chance to explore the city's architecture, history and culture. Nidaros Cathedral, the Archbishop's Residence, Stiftsgården, the old quays, the city bridge, the traditional buildings...! Perhaps it's a good idea to go on a sightseeing tour. There is a regular shuttle service to the airport for your afternoon flight back to the UK.

## Price from £1295 per person

### Trip notes

All train times are approximate. The cabin on the Hurtigruten cruise is a private unspecified twin cabin. All hotel accommodation includes breakfast. Breakfast and other meals are not included on the cruise. Airport transfers are not included but these can easily be arranged locally. We can offer more advice at the time of booking. Excursions, activities and the cruise schedule may be subject to alterations.

## Stockholm upgrades



### Nordic Sea Hotel \*\*\*\*

Great personal service and situated next to the central bus and rail station, perfect for a hassle free holiday. The Nordic Sea is just a short walk from all of Stockholm's major attractions including the world famous Old Town, the many archipelago boats, the Vasa museum and the main shopping districts. It is also home to the world's first permanent ICEbar.

**Upgrade from £20 per person**



### Nordic Light Hotel \*\*\*\*

A top class designer hotel located right in the heart of Stockholm and just a short walk from all of Stockholm's major attractions. Guests enjoy all the services offered at the Nordic Sea Hotel plus luxurious accommodation with complete control over the advanced mood lighting, designed by Kai Piippo. Advanced Mood Lighting available in 'Mood' rooms.

**Upgrade to a mood room from £45 per person**